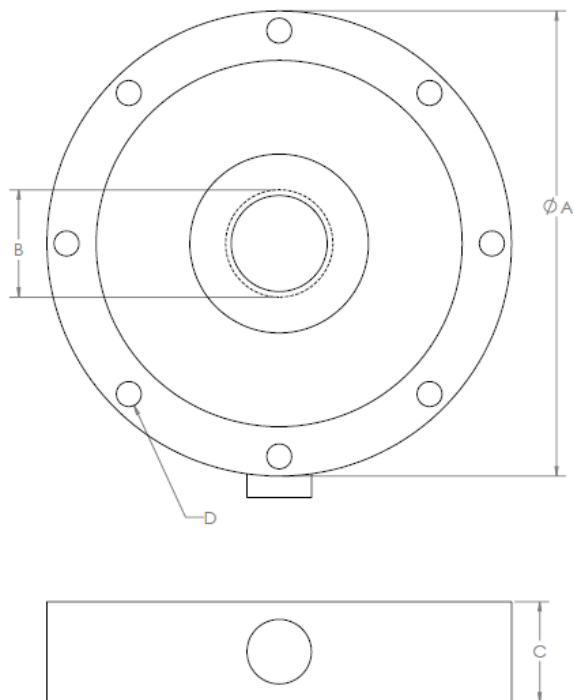
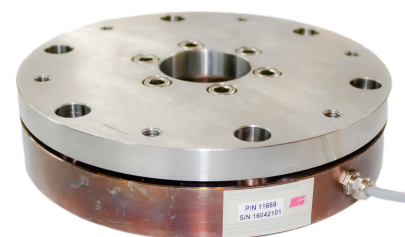




## Submersible Pancake Load Cell



A	Overall Diameter	Customer Specified
B	Thru Hole Diameter / Tapped Hole	Customer Specified
C	Overall Thickness	Customer Specified
D	Mounting Pattern	Customer Specified



### STANDARD PERFORMANCE SPECIFICATIONS

MODEL / TYPE	Submersible Pancake Load Cell
CAPACITY (FS)	1,000 to 200,000+ lbf
OUTPUT	2.0 mV/V (Nominal), Others Available
BRIDGE RESISTANCE	350 Ohms (Nominal), Others Available
MAXIMUM ERROR (ACCURACY)	0.05 to 0.25% of FS
ZERO BALANCE	1% of FS
STANDARD OPERATING TEMP RANGE	25 to 140°F (-4 to +63°C)
OPTIONAL OPERATING TEMP RANGE	Contact Sensing Systems
SAFE OVERLOAD	150% of FS
ENVIRONMENTAL PROTECTION	Submersible/Waterproof
MATERIAL OPTIONS	Stainless Steel, Aluminum, Titanium

### FEATURES

- NIST traceable calibration
- Operation in tension and compression
- Capacity 100 to 500,000 lbs
- 150% Overload capacity
- Heat treated stainless steel construction

### OPTIONS

- Higher output mV/V
- High level output (0-5 VDC, 0-10 VDC, 4-20 mA)
- Harsh environment capabilities
- Custom mounting configurations
- Material options available: Aluminum, Titanium, Beryllium Copper
- Fully submersible/waterproof
- Cryogenic and high temperature
- Custom cable lengths and connectors available

### Contact Us for Your Custom Applications

508-992-0872 | [info@sensing-systems.com](mailto:info@sensing-systems.com) | 7 Commerce Way, Dartmouth, MA 02747 | [www.sensing-systems.com/load-cells](http://www.sensing-systems.com/load-cells)

